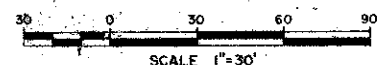


38-16

16

River Pines



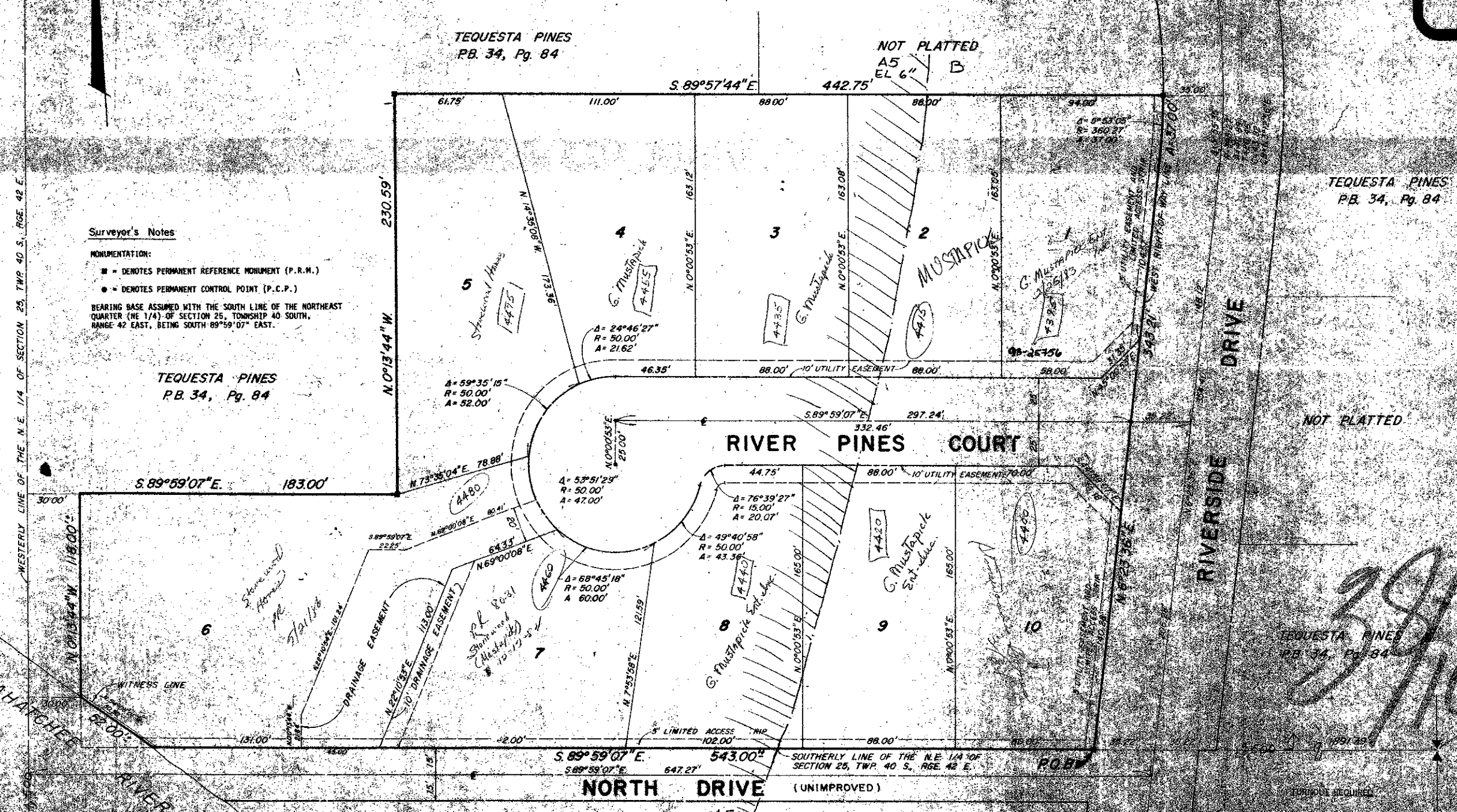
AUGUST, 1978

Surveyor's Notes

MONUMENTATION:

- DENOTES PERMANENT REFERENCE MONUMENT (P.R.M.)
- DENOTES PERMANENT CONTROL POINT (P.C.P.)

BEARING BASE ASSUMED WITH THE SOUTH LINE OF THE NORTHEAST QUARTER (NE 1/4) OF SECTION 25, TOWNSHIP 40 SOUTH, RANGE 42 EAST, BEING SOUTH 89°59'07" EAST.



TEQUESTA PINES
P.B. 34, Pg. 84

TEQUESTA PINES
P.B. 34, Pg. 84

NOT PLATTED
A5
EL 6" B

TEQUESTA PINES
P.B. 34, Pg. 84

NOT PLATTED

RIVER PINES COURT

NORTH DRIVE (UNIMPROVED)

RIVERSIDE ON THE LOXAHATCHEE
PLAT BOOK 9, PAGE 4

TEQUESTA PINES
P.B. 34, Pg. 84

FORMS REQUIRED

1000-064

NOTE: NO BUILDING SHALL BE PERMITTED ON ANY LOT OR TRACT UNLESS THE SAME SHALL BE PLANNED ACCORDING TO THE ZONING ORDINANCES OF THE CITY OF JACKSONVILLE, FLORIDA.

2 2